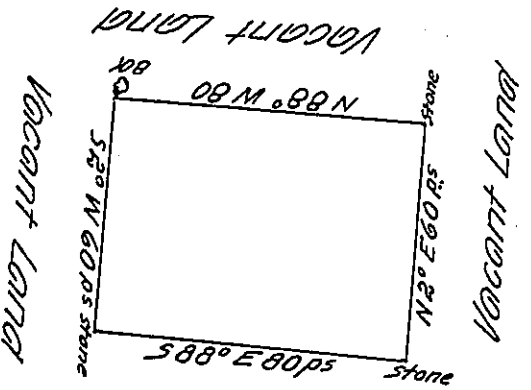


C-155-23



Improvement of
Bastian Lish

A draught of a tract of land situate in Bethel
 near Michl. Crafts
 Township Berks County, containing twenty eight acres &
 a quarter & allowance of six P cent Surveyed the 26th day of
 May 1767 unto Charles & Alexander Stedman in pursuance of an appli-
 cation dated the 25 day of July 1765 N^o 94 Taken from the field works of
 John Scull deced

To John Lukens Esquire }
 Surveyor General }

P⁻ W^m Scull - -

IN TESTIMONY that the above is a copy of the original remaining on file in
 the Department of Internal Affairs of Pennsylvania, made
 conformably to an Act of Assembly approved the 16th day of
 February, 1833, I have hereunto set my Hand and caused
 the Seal of said Department to be affixed at Harrisburg,
 this twenty sixth day of July 1905

Geo. P. Brown
 Secretary of Internal Affairs.